



AIR CIRCULATOR

APPLICATION

High volume axial fans suitable to create a uniform indoor climate and to recirculate air in commercial and industrial buildings, dairy barns and greenhouses.

Suitable for wall installation with the motorised shutter (accessory on request), or suspended at ceiling/beam with the anti-bird or safety guards (accessory on request).

CONSTRUCTION

- Casing made from stainless steel to ensure full corrosion protection.
- Adjustable pitch aerofoil impellers are provided with blades made from high quality Glass Reinforced Polypropylene.
- Hubs manufactured from die cast aluminium alloy
- Assembled impellers to be dynamically balanced to ISO 14694 Grade G6.3.
- Conveyor made from technopolymer for ease of cleaning and not susceptible to corrosion.
- High efficiency three-phase EC brushless motor, 200-480Vac/3ph/50/60Hz, IP65, with integrated electronic system and EMC filters. Suitable for S1 continuous service. Speed controllable.
- Simplified electrical connection: precabled.

FEATURES & BENEFITS

- Effective to reduce the heat stress, to enhance the comfort and productivity of the occupants/animals and remove condensation from ceilings and walls.
- Ideal for in-line installation on the feed lane and on the rest/waiting area (the so-called "wind channel" ventilation).
- Top silent operation thanks to the gearless motor and the special airfoil design.
- Direct-driven motor with permanent magnets for top low energy consumption.
- No ordinary maintenance.
- Robust stainless steel structure for long life.
- Impellers are factory set at an angle to provide maximum performance.
- Eyebolt hooks to simplify hanging and inclined installation
- Integrated EMC filters to prevent electromagnetic interference from other devices.
- Fan are suitable for operating temperatures from 0°C to +50°C.
- Simplified electrical connections, pre-wired cable with screw connectors that guarantee safety, reliability and waterproofness.
- Modbus interface
- Unit performances are tested to the latest standard meaning accurate information that can be relied upon.
- Designed and manufactured in accordance with Machinery Directive (MD), Low Voltage Directive (LVD), Electromagnetic Compatibility Directive (EMC).

ACCESSORIES

- Motorised shutter with actuator for wall installation.
- Anti-bird motor or impeller side guard in galvanised steel.
- Safety motor or impeller side guard in galvanised steel.
- Remote controllers.

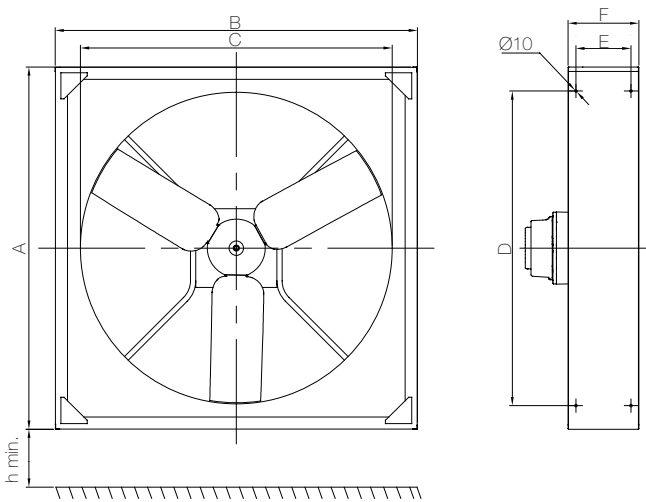
AD1400A

Performance @ 400Vac 50Hz

Description	Fan diameter	Max Rotation Speed	Max absorbed power	Max Thrust	Max Air Flow AMCA 230-15			Max Air Flow AMCA 230-99		
					cfm	m³/h	SPI ⁽¹⁾ W/(m³/s)	cfm	m³/h	SPI ⁽¹⁾ W/(m³/s)
AD1400A	1170	475	1,04	98	19855	33733	111	28079	47706	78,5

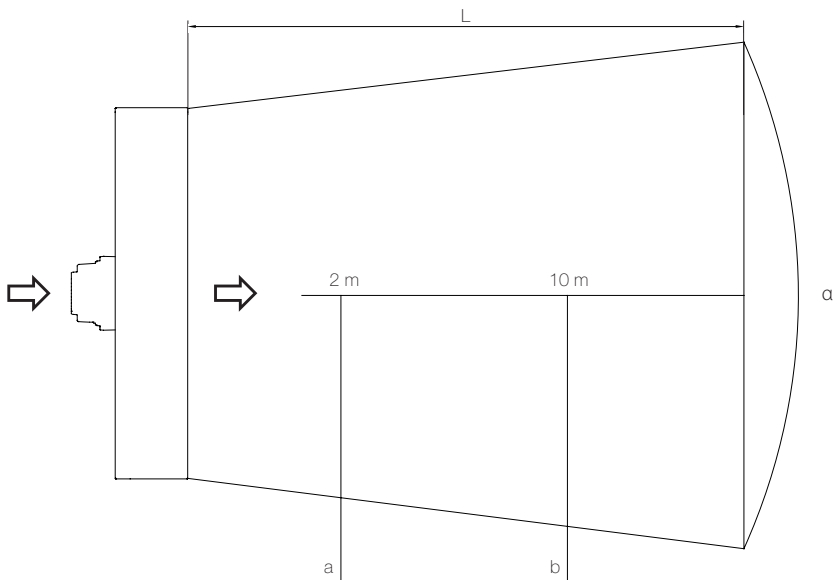
(1) Max absorbed power / max airflow

Dimensions (mm) and Weight (kg)



Description	A	B	C	D	E	F	h min.	Weight
AD1400A	1382	1382	1189	1200	210	270	2700	50

Velocity pattern



Description	Q [m³/h]		L @ air velocity = 0,2 m/s [m]	Air velocity @ 2m [m/s]	Air velocity (10m) [m/s]
AD1400A	33733	50°	27	5,6	2,4

Accessories

Description		Motorised shutter		Motor side bird guard		Impeller side bird guard		Motor side safety guard		Impeller side safety guard		Potentiometer
	Description	Code	Description	Code	Description	Code	Description	Code	Description	Code	Description	Code
AD1400A	ES1400A	005743	RT-BM	003613	RT-BV	005440	RT-SM	005437	RT-SV	005439	CTRL-A2	005667

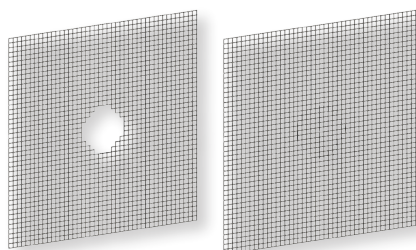
Description		Potentiometer		Control panel		Anemometer		Temperature probe		Control panel		Humidity probe
	Description	Code	Description	Code	Description	Code	Description	Code	Description	Code	Description	Code
AD1400A	CTRL-A	002049	CTRL-XWS	005324	AN-SY	002741	SV-10K	005327	CTRL-XTHI	005324	YGRO-100	005326

ES1400A



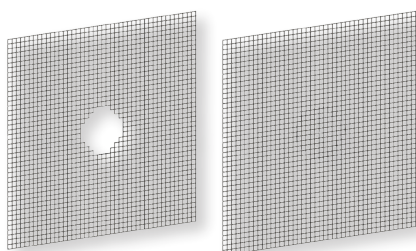
- Motorised shutter to be mounted on the unit when wall mounted.
- Casing and blades made from robust galvanised steel.
- Opening/closing of the blades controllable with CTRL-A2 (accessory on request).

RT-BM/RT-BV



- Anti-bird guard in galvanised steel for motor/impeller side installation

RT-SM/RT-SV



- Safety guard in galvanised steel for motor/impeller side installation

AD1400A

CTRL-A2



- Potentiometer with front knob to adjust the motor speed
- Provided with two-pole switches (ON/OFF): one for the fan and one for the shutter activation.
- Front yellow led to indicate that the load is active
- Controls one fan only
- 230V~ 50/60Hz
- Supplied with IP55 wall surface box

CTRL-A



- Potentiometer with front knob to adjust the motor speed
- Provided with one-pole switch (ON/OFF)
- Front yellow led to indicate that the load is active
- Controls one fan only
- 230V~ 50/60Hz
- Supplied with IP55 wall surface box

CTRL-XWS

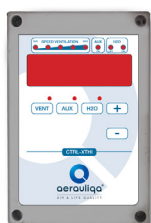


AN-SY

SV-10K

- To control the ventilation units according to temperature and wind speed.
- Three operating modes:
 - Mode A: control of ventilation according to wind speed by means of an anemometer (accessory on request) and blocking of the fan according to temperature
 - Mode B: control of ventilation according to room temperature using 1 temperature probe (supplied as standard) and blocking of the fan according to wind speed
 - Mode C: control of ventilation according to room temperature by means of 2 temperature probes (additional temperature probe on request) to manage winter destratification and summer comfort ventilation
- Regulation 0-10V
- 230Vac - 50/60Hz
- Can control up to 10 units
- IP65 wall-mounted casing
- Dimensions: 160x110x81 mm
- 1 temperature probe included
- Wind speed probe (anemometer) available on request
- Additional temperature probe for operating Mode C available on request

CTRL-XTHI



- To control the ventilation units according to temperature and THI level.
- Shower control and auxiliary ventilation activation.
- Regulation 0-10V
- 230Vac - 50/60Hz
- Can control up to 10 units
- IP65 wall-mounted casing
- Dimensions: 160x110x81 mm
- Temperature probe included
- Humidity probe available on request